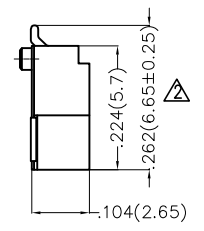
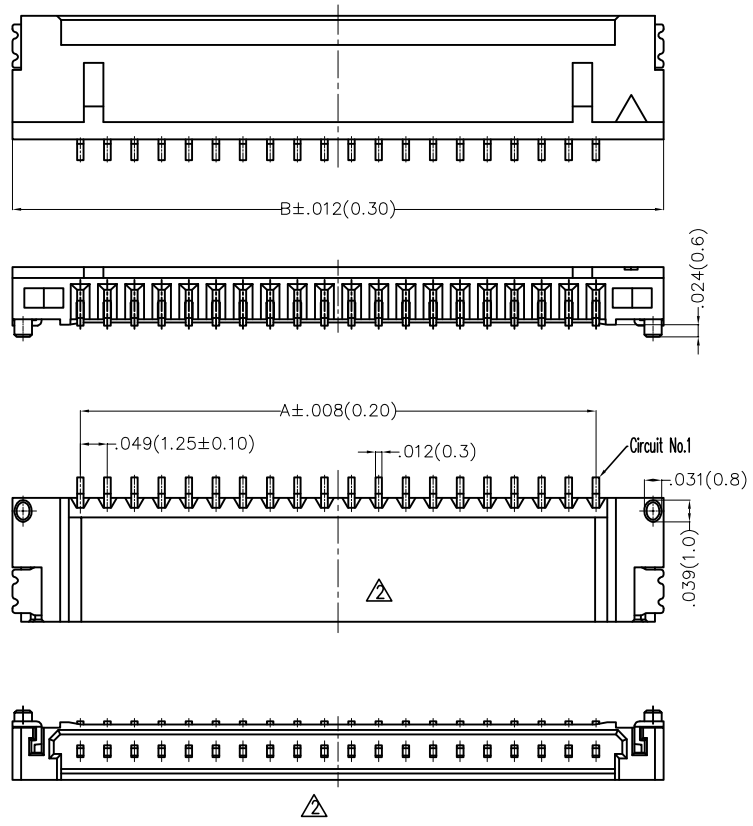


REV	LOCATIONS	DESCRIPTION	DATE	REVISER	APPD
1		MPQ: Change 1,000 pcs into 1,500 pcs / reel	24/FEB/20	KATE	CHERRY
2		New View and Dimensions	05/AUG/24	MATT	LEO
3		Update packaging specifications	20/NOV/25	MATT	LEO

Electrical
 Current Rating: 1.0A AC(rms)/DC
 Voltage Rating: 150V AC(rms)/DC
 Contact Resistance: 30 mΩ Max
 Insulation Resistance: 500 MΩ MIN
 Withstanding Voltage: 500V AC r.m.s
 Temperature Range—Operating: -35°C~+85°C
 Material and Plating
 Housing: PA9T(UL 94V-0)
 Contact Pin: Phosphor bronze
 Solder Tab: Phosphor bronze
 Mates With: FHG12503 Series.



Circuits (n)	Part No.	Dimensions(in/mm)	
		A	B
20	FWF12508-S20B24W5M	.935(23.75)	1.181(30.00)
30	FWF12508-S30B24W5M	1.427(36.25)	1.673(42.50)

Ordering Information

FWF 125 08 — S XX B X 4 W5 M
 1 2 3 4 5 6 7 8 9 10

1 Category FWF-Wafer	2 Series Number 125-Pitch1.25mm	3 Distinction No. 08	4 Row Option S-Single Row	5 Circuits XX	6 Entry Angle B-90° Angle
7 Plating 2-Tin Plated	8 Material-Resin 4-PA9T	9 Color-Resin W5-Natural	10 Packaging M-Reel		

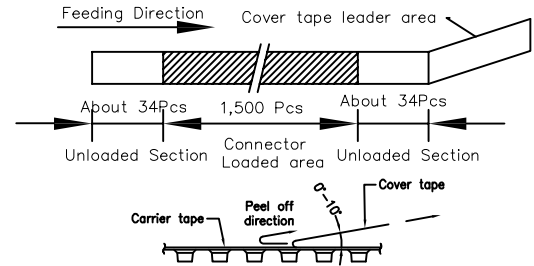
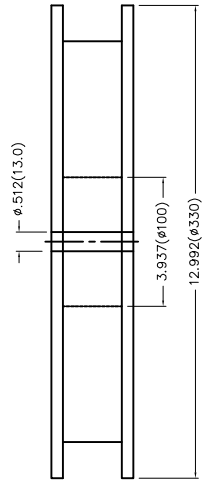
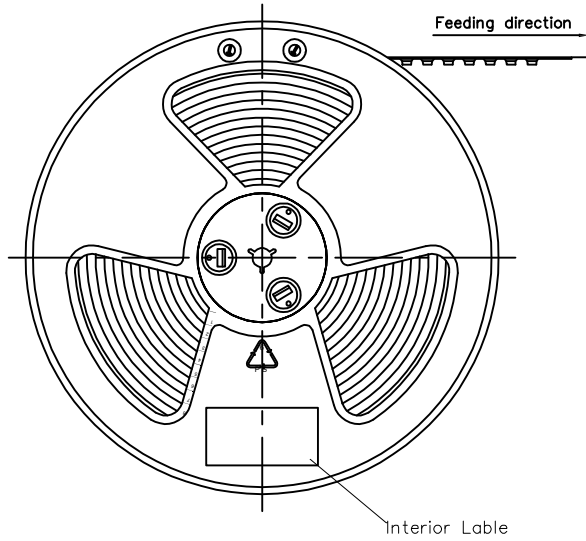
Recommended P.C.Board Layout
 General Tolerances: ±0.05mm

	GENERAL TOLERANCES (UNLESS SPECIFIED)		APPROVE BY FRANK	DATE 8/JUL/13	PART NO. FWF12508-SXXBX4W5M	ITEM NO. FWF12508	
	DESIGN UNITS Inch (metric)	X.±0.012(0.30)	.X'±5'	CHECKED BY JACOB	DATE 8/JUL/13	TITLE Wire to Board (Wafer) Pitch 1.25mm 90° Angle (SMT)	
SCALE 5:1		X.XX±.006(0.15)	.XX'±1'	DRAWN BY CHERRY	DATE 8/JUL/13	THIS DRAWING CONTAINS INFORMATION THAT IS PROPRIETARY TO TXGA INDUSTRIAL ELECTRONICS(S.Z)CO.,LTD AND SHOULD NOT BE USED WITHOUT WRITTEN PERMISSION	
	X.XXX±.004(0.10)	.XXX'±0.5'					SHEET NO. 1/2

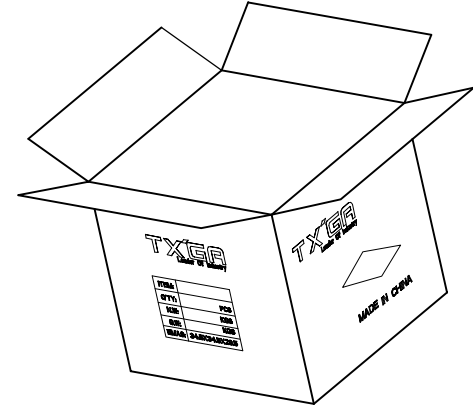
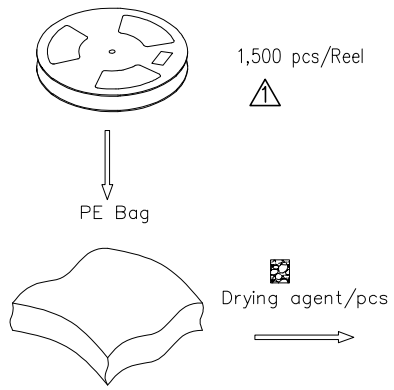
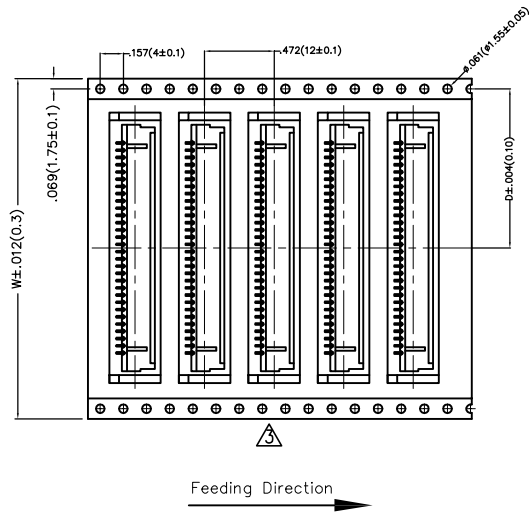
REV	LOCATIONS	DESCRIPTION	DATE	REVISER	APPD

Note:

- 10 sprocket hole cumulative tolerance ± 0.2
- Carrier camber is within 1.0mm in 100mm
- Material: Conductive polystyrene Alloy 100% recyclable
- All dimensions meet EIA-481-3 requirements
- Component load per 13" reel: 1,500 pcs



Circuits (n)	Dimensions(in/mm)	
	D	W
20	.795(20.20)	1.732(44.00)
30	1.033(26.25)	2.205(56.00)



 THIRD ANGLE PROJECTION	GENERAL TOLERANCES (UNLESS SPECIFIED)		APPROVE BY FRANK	DATE 8/JUL/13	PART NO. FWF12508-SXXBX4W5M	ITEM NO. FWF12508	 Building Technology Cornerstone
	DESIGN UNITS Inch (metric)	X.±.012(0.30)	X'.±5'	CHECKED BY JACOB	DATE 8/JUL/13	TITLE Wire to Board (Wafer) Pitch 1.25mm 90° Angle (SMT)	
SCALE 5:1	SIZE A4	X.XX±.006(0.15)	.XX'±1'	DRAWN BY CHERRY	DATE 8/JUL/13	THIS DRAWING CONTAINS INFORMATION THAT IS PROPRIETARY TO TXGA INDUSTRIAL ELECTRONICS(S.Z)CO.,LTD AND SHOULD NOT BE USED WITHOUT WRITTEN PERMISSION	
		X.XXX±.004(0.10)	.XX'±0.5'			REV 3	SHEET NO. 2/2